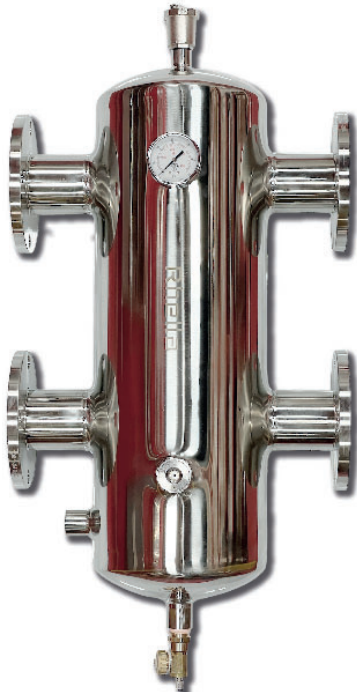


Hydraulic Separators



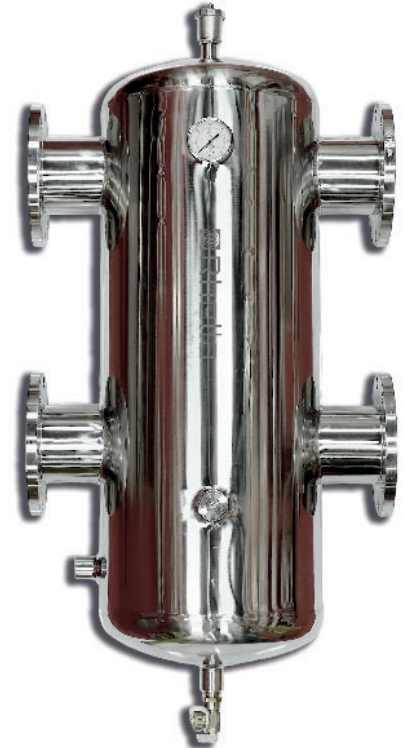
Stainless Steel Hydraulic Separators with Flange Connections



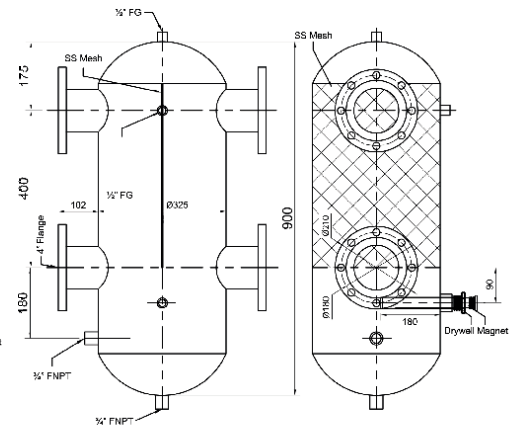
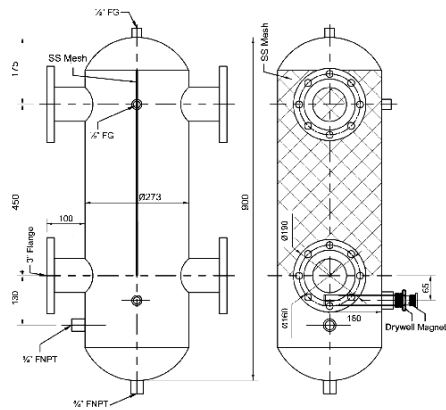
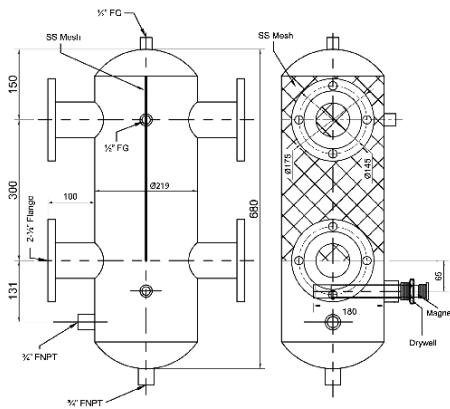
LLH250



LLH300



LLH400



- M50 grade neodymium rod magnets
- 10,000 gauss holding force, temperature rated to 90C
- Operation temperature range, 0-100°C/132-270°F
- 1/2" Air vent, Drain, Included

- Coalescing Media: Stainless Steel
- Connection for makeup water
- Max. Operational Pressure, 10 bar/150 PSI
- Pressure Gauge, Included

| Model Number | Flange | Flow Rate | Drain | Makup Water | Magnet Size | Weight |
|--------------|----------------------------------|-----------------|-----------|-------------|--------------|---------|
| LLH250 | 2-1/2" DN65 ANSI B16.5 Class 150 | 60 GPM 4ft/sec | 1/2" FNPT | 1/2" FNPT | 25ø X 190 mm | 50 Lbs |
| LLH300 | 3" DN80 ANSI B16.5 Class 150 | 92 GPM 4ft/sec | 3/4" FNPT | 3/4" FNPT | 25ø X 190 mm | 75 Lbs |
| LLH400 | 4" DN100 ANSI B16.5 Class 150 | 160 GPM 4ft/sec | 3/4" FNPT | 3/4" FNPT | 25ø X 190 mm | 100 Lbs |